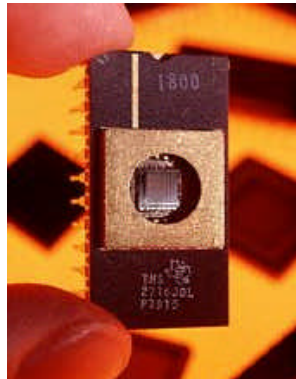


Ultra™ EDI



Ultra™ brand Electro-Deionization (EDI) systems from Haliant Technologies provide the right combination of value and features required for any high-purity application. Every Ultra™ EDI system is manufactured from the highest quality components to the exacting standards of all Haliant Technologies equipment. Standard Ultra™ EDI models are available for any high-purity application from 15,000 to over 150,000 GPD.

Ultra™ brand Electro-Deionization systems are designed to produce 16-18 meg-ohm ultrapure permeate water suitable for most electronics, semiconductor, and pharmaceutical applications. Ultra™ EDI systems offer a compact, modular, and reliable solution for production of ultrapure water without the need for chemical regeneration.



Electro-Deionization Systems

Ultra™ EDI



Standard Features

- Adjustable DC Power Supply
- Automatic Low Feed Flow Alarm
- Sediment Prefilter
- Prefilter Pressure Gauges
- 316SS Pressure Gauges
- PVC and Polypropylene Piping and Valves
- Conductivity and Resistivity Meters
- Sample Valves
- Compact, Modular Design
- Product and Feed Flowmeters
- Leak-free design

Optional Features

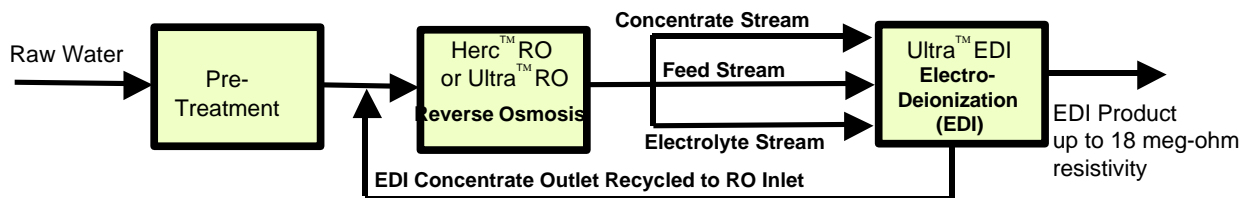
- pH, Temperature, TOC, Turbidity Instruments
- Special Color or Private Label
- Concentrate Stream Recycling
- CO₂ Removal Cartridge
- Clean-in-Place System
- Sanitary Piping and Fittings
- Crating

Design Assumptions

- Feed water must be Reverse Osmosis permeate or equivalent
- Feed water conditions, Conductivity, Flows, and Recovery in accordance with EDI module manufacturer's recommendations

System Specifications

MODEL	SYSTEM CONFIGURATION				APPROXIMATE SHIPPING DIMENSIONS				APPROXIMATE SKID DIMENSIONS			
	PRODUCTION GPD	RECOVERY m ³ /D	RECOVERY (%)	NUMBER OF EDI MODULES	POWER REQTS		(L x W x H) (inches)	(L x W x H) (cm)	WEIGHT (lbs/Kg)	(L x W x H) (inches)	(L x W x H) (cm)	WEIGHT (lbs/Kg)
					60Hz (amps)	50Hz (amps)						
ULTRA-EDI-0.5	720	3	90-95	1	0.3	0.4	24 x 24 x 54	61 x 61 x 137	80/36	24 x 24 x 54	61 x 61 x 137	75/34
ULTRA-EDI-1	1,440	5	90-95	1	0.6	0.7	24 x 24 x 54	61 x 61 x 137	85/38	24 x 24 x 54	61 x 61 x 137	80/36
ULTRA-EDI-4	5,760	22	90-95	1	2	2	24 x 24 x 54	61 x 61 x 137	95/42	24 x 24 x 54	61 x 61 x 137	90/40
ULTRA-EDI-7	10,080	38	90-95	1	3	3	24 x 24 x 54	61 x 61 x 137	110/50	24 x 24 x 54	61 x 61 x 137	105/48
ULTRA-EDI-10	14,400	55	90-95	1	4	5	24 x 24 x 54	61 x 61 x 137	130/59	24 x 24 x 54	61 x 61 x 137	125/57
ULTRA-EDI-14	20,160	76	90-95	2	6	7	76 x 48 x 72	193 x 122 x 183	550/250	64 x 37 x 60	163 x 94 x 152	250/114
ULTRA-EDI-20	28,800	109	90-95	2	8	10	76 x 48 x 72	193 x 122 x 183	600/273	64 x 37 x 60	163 x 94 x 152	275/125
ULTRA-EDI-30	43,200	164	90-95	3	12	15	76 x 48 x 72	193 x 122 x 183	650/295	64 x 37 x 60	163 x 94 x 152	300/136
ULTRA-EDI-40	57,600	218	90-95	4	16	19	76 x 48 x 72	193 x 122 x 183	700/317	64 x 37 x 60	163 x 94 x 152	350/159
ULTRA-EDI-60	86,400	327	90-95	6	20	24	76 x 48 x 72	193 x 122 x 183	750/340	64 x 37 x 60	163 x 94 x 152	400/182
ULTRA-EDI-80	115,200	436	90-95	8	24	29	76 x 48 x 72	193 x 122 x 183	800/363	64 x 37 x 60	163 x 94 x 152	450/204
ULTRA-EDI-100	144,000	545	90-95	10	28	33	76 x 48 x 72	193 x 122 x 183	850/386	64 x 37 x 60	163 x 94 x 152	500/227
ULTRA-EDI-120	172,800	654	90-95	12	32	39	76 x 48 x 72	193 x 122 x 183	900/409	64 x 37 x 60	163 x 94 x 152	550/250



Typical Process Flow using ULTRA™ EDI Electro-Deionization (EDI) System

